

Tubular Entryset Lock Model Description

EMTEK®

REV. 20 06/12/2023

MODEL "A"

DENVER, REMINGTON
RECTANGULAR MONOLITHIC & SECTIONAL

MODEL "B"

ART NOUVEAU, OCTAGON, IMPERIAL,
MELROSE, RIBBON & REED, OVAL RIBBON & REED
ARTS & CRAFTS MONOLITHIC & FULL LENGTH
WILSHIRE, HAMDEM, LAFAYETTE, NORMANDY
KNOXVILLE, ORLEANS, OCTAGON, APOLLO, ORION
ZEUS, ARES, BADEN, DAVOS, LAUSANNE
EMTouch,[™] RIDGEMONT, LOGAN, BRIGHTON
MARTINIQUE, URBAN MODERN SECTIONAL
TRANSITIONAL HERITAGE MONOLITHIC & SECTIONAL,
HERCULES SMOOTH/KNURLED SECTIONAL & MONOLITHIC
HERCULES SMOOTH/KNURLED FULL LENGTH

MODEL "C"

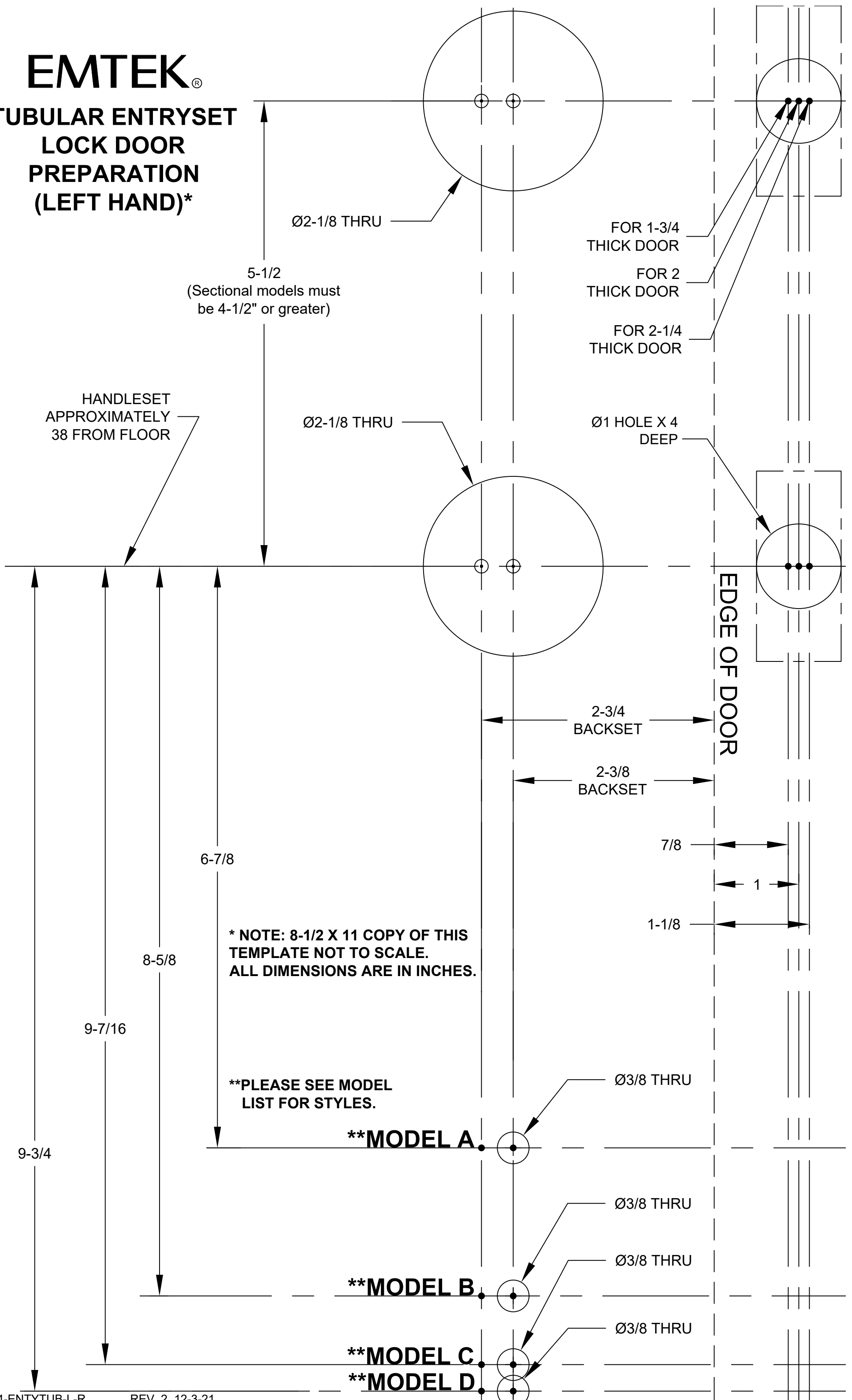
GREELEY, TUSCANY, RICHMOND
MARIETTA, SARATOGA, NASHVILLE
RECTANGULAR FULL LENGTH, WILMINGTON
QUINCY, FRANKLIN, ADAMS, JEFFERSON
RUSTIC MODERN RECTANGULAR SECTIONAL,
MONOLITHIC & FULL LENGTH

MODEL "D"

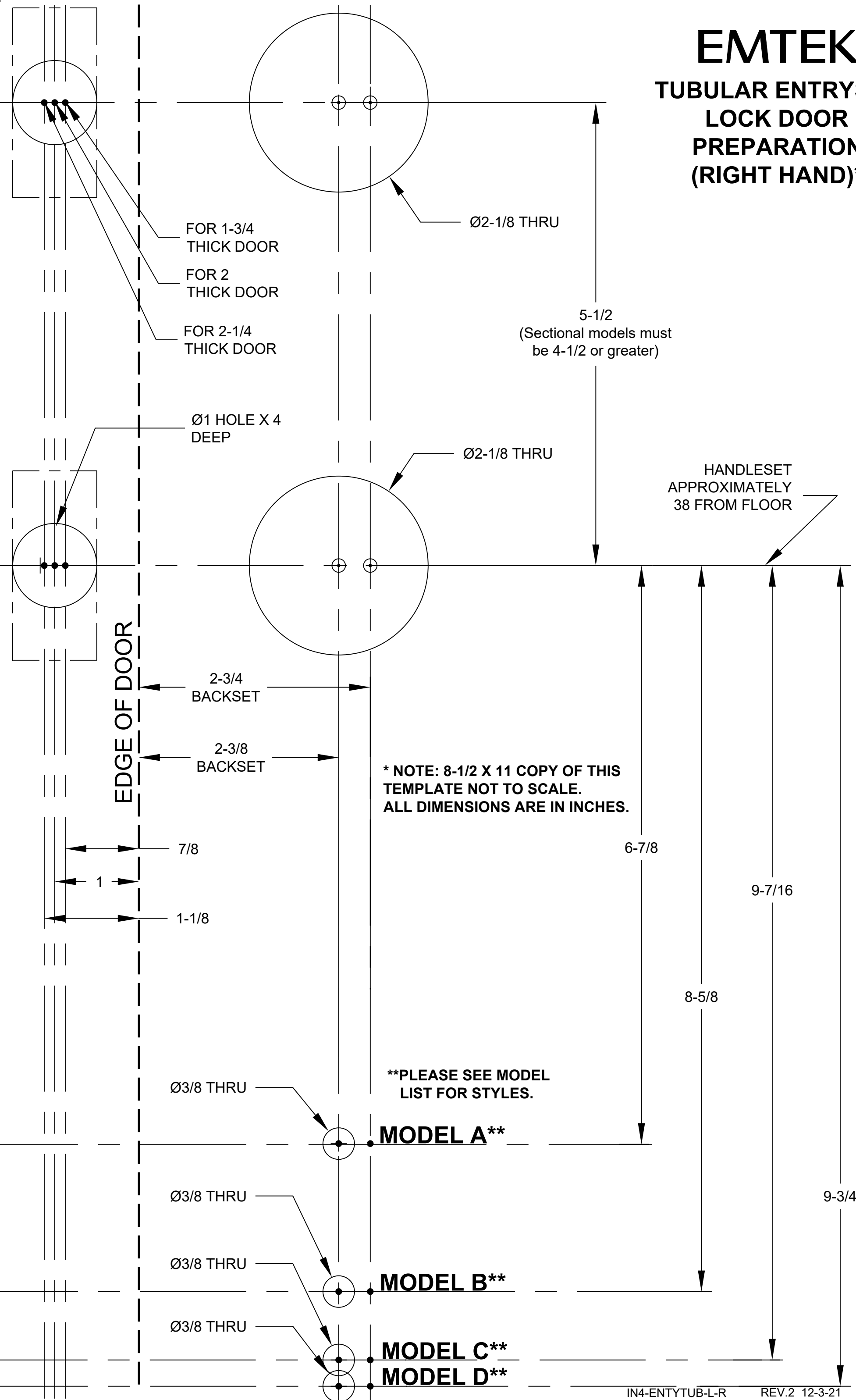
SAN CARLOS

EMTEK®

TUBULAR ENTRYSET LOCK DOOR PREPARATION (LEFT HAND)*



EMTEK® TUBULAR ENTRYSET LOCK DOOR PREPARATION (RIGHT HAND)*



FOR 1-3/4 THICK DOOR
FOR 2 THICK DOOR
FOR 2-1/4 THICK DOOR

Ø2-1/8 THRU

5-1/2
(Sectional models must be 4-1/2 or greater)

Ø1 HOLE X 4 DEEP

Ø2-1/8 THRU

HANDLESET APPROXIMATELY 38 FROM FLOOR

EDGE OF DOOR

2-3/4 BACKSET

2-3/8 BACKSET

* NOTE: 8-1/2 X 11 COPY OF THIS TEMPLATE NOT TO SCALE. ALL DIMENSIONS ARE IN INCHES.

7/8

1

1-1/8

6-7/8

9-7/16

8-5/8

Ø3/8 THRU

**PLEASE SEE MODEL LIST FOR STYLES.

MODEL A**

Ø3/8 THRU

9-3/4

MODEL B**

Ø3/8 THRU

MODEL C**

Ø3/8 THRU

MODEL D**